



DIGITAL SIGNAGE LED SCREEN SOLUTIONS

WELCOME TO ONE DIGITAL SIGNAGE

LED & LCD DIGITAL SIGNAGE SPECIALISTS

One Digital Signage is well known as ONE of the UKs Leading (OEM) Original Equipment Manufacturer's behind many well known Digital Signage Brands!

Based in the heart of the West Midlands in The Black Country, famous for its industrial steel & fabrication for 100s of years, we are manufacturing a large range of LCD and LED; Digital Signage Kiosks, Totems, Displays, Screen Enclosures & Touch Screens, also Large format LED Screens Structural frames for both indoor & outdoor solutions!

Over 20 years Industry Experience!

Made in The UK! From industrial Revolution to Digital Evolution!

ONE Digital Signage Sister Company

Project Audio Visual Ltd based in Reading UK & Project AV LLC
550 Reserve Street
Southlake, TX
United States, 76092



ONE DIGITAL CLIENTS

We work across multiple sectors with a range of national and blue chip companies...





Client: Mass Media
Location: London City Approach
Mega 6 DOOH LED Screen Installed by ONE

LED SOLUTIONS – CASE STUDIES

Large Format & DOOH Advertising Screens



CURVED LED INSTALLATIONS & SOLUTIONS

P10 & P2.5 Located in Reading & London

[READ MORE](#)



LED BANNER INSTALLATION – P3.9 LED

Located in Las Vegas

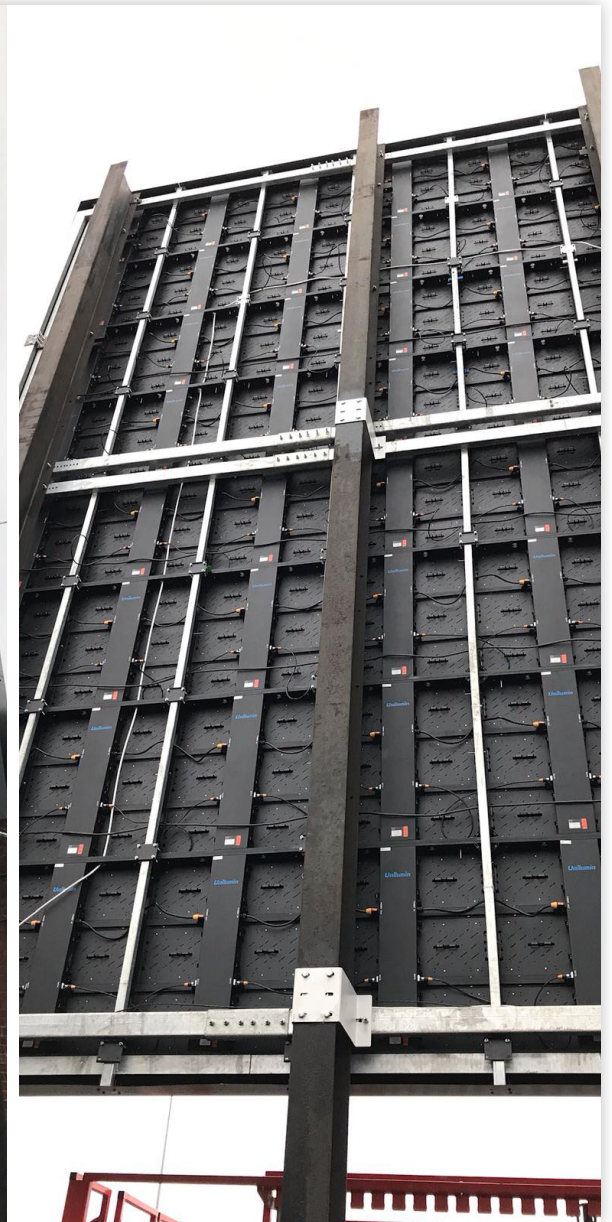
[READ MORE](#)



LARGE FORMAT LED ENCLOSURES – P3.9 & P6 LED

Located in Southbank Centre, London & Black Horse Green King Inns, Liverpool

[READ MORE](#)



ROADSIDE MEGA6 DOOH – P10 LED

London City Approach

[READ MORE](#)



LED CABINETS

Indoor / Outdoor Fixed Install

Unilumin

PREFERRED LED SUPPLIER

OUTDOOR LED CABINETS

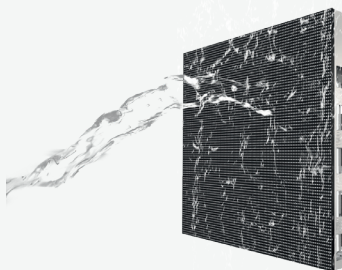
USURFACE / USTORM

The Longest Lifespan Outdoor SMD LED Display
/A Disruptive Product for DOOH Market

Front & Rear Service



IP65 Waterproof



	USURFACE P6	USURFACE P8	USURFACE P10	USTORM P10	USTORM P16	USTORM P20
CABINET RESOLUTION (PIXELS)	180×180	144×144	120×120	120×120	72×72	60×60
CABINET SIZE (MM)	H1200×W800×D85	H1200×W800×D85	H1200×W800×D85	W1200×H1200×D85	W1200×H1200×D85	W1200×H1200×D85
MATERIAL	Aluminium	Aluminium	Aluminium	Aluminium	Aluminium	Aluminium
BRIGHTNESS (CD/SQM)	5500	5500	5500	7500	7500	7000
WEIGHT (KG/CABINET)	40.5	40	39	42.65	44.45	42.65

INDOOR LED CABINETS

USLIM

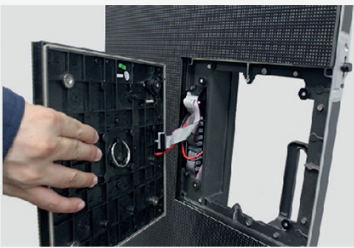
Innovative and Flexible LED Signage Solution

Flexible Maintenance

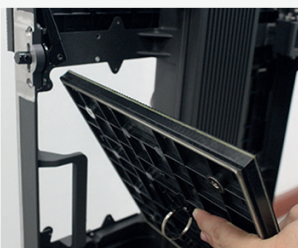
Special push and pull design between module and cabinet
Complete front and rear service available



Push



Pull



Replace

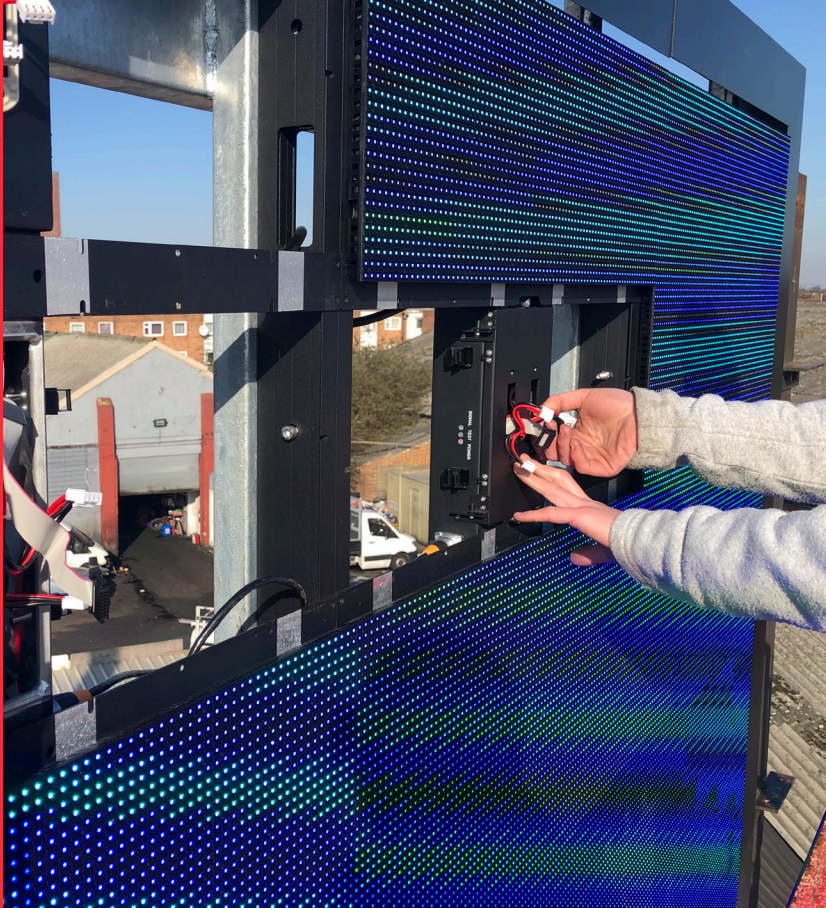


	USLIM P2.6	USLIM P3.9	USLIM P4.8	USLIM P4.8
CABINET RESOLUTION (PIXELS)	192×384	128×256	104×208	84×168
CABINET SIZE (MM)	H1000×W500	W500×H1000×D84.15	W500×H1000×D84.15	W500×H1000×D84.15
MATERIAL	Aluminium	Aluminium	Aluminium	Aluminium
BRIGHTNESS (CD/SQM)	900	5500	5500	5500
WEIGHT (KG/CABINET)	13	15	15	15



WHY WORK WITH US?

Reasons to purchase LED from One Digital



10 years' Experience working with **LED Large Format** and **DOOH** Displays

We take care of the complete solution:

- ✔ **Designing the solution** (including bespoke enclosures).
- ✔ Assistance with **planning permission** where required.
- ✔ **Project management** which involves liaising with the client to ensure installation goes ahead with minimal disruption/issues. This will include advice on power requirements, loads, framework fixing points etc.
- ✔ **Logistics** (avoiding often hidden costs).
- ✔ **Installation and commissioning** including the wiring design of screen, programming of the LED processor and setup of light sensor when required in specific locations.
- ✔ **UK based ongoing support**
- ✔ **Bespoke frameworks** including exterior cladding manufactured per solution in the UK
- ✔ **Remote Monitoring** of the screen where required

Quality Control

On arrival in the UK we will test every individual LED panel, resolve issues from spares and deal with the RMA procedure if necessary (small issues are not uncommon due to the nature of the product and required shipping methods).

Trust

Guarantee that the client receives the product. As many LED suppliers request full payment up front (although staged) and state EX Works on the quotes, once the LED leaves their premises full responsibility passes to the client.

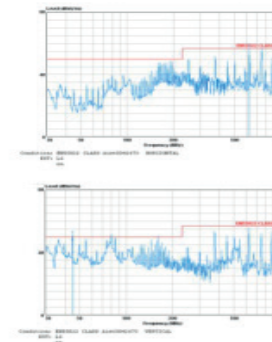
Complete Solution

Installation and commissioning including the wiring design of screen, programming of the LED processor and setup of light sensor when required in specific locations.

Certified

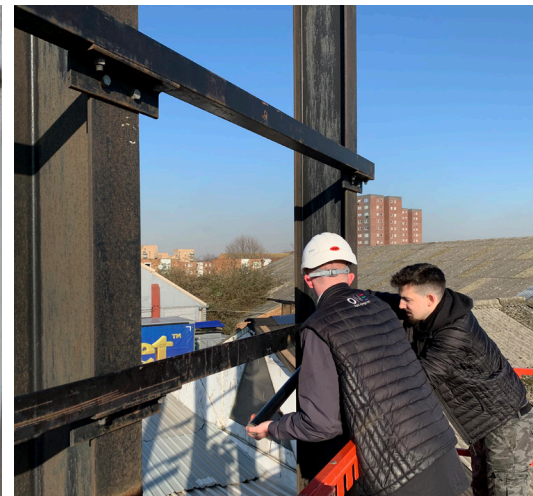
We ensure all our products carry the below necessary Certification to allow product to be installed in the UK (products failing to meet the below requirements supplied into the UK will be the responsibility of the Landlord of the screen location).

All our LED conforms to full **EU Electrical & EMC Regulations**

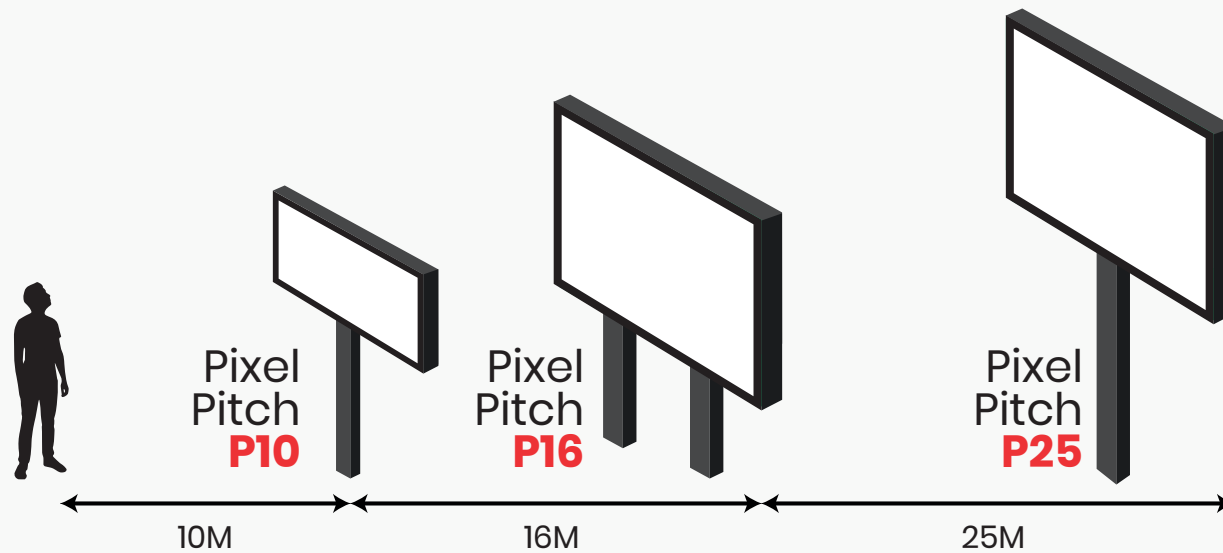


Testing Result	
The truss beam break down first at 44000N and the product show no breakage.	

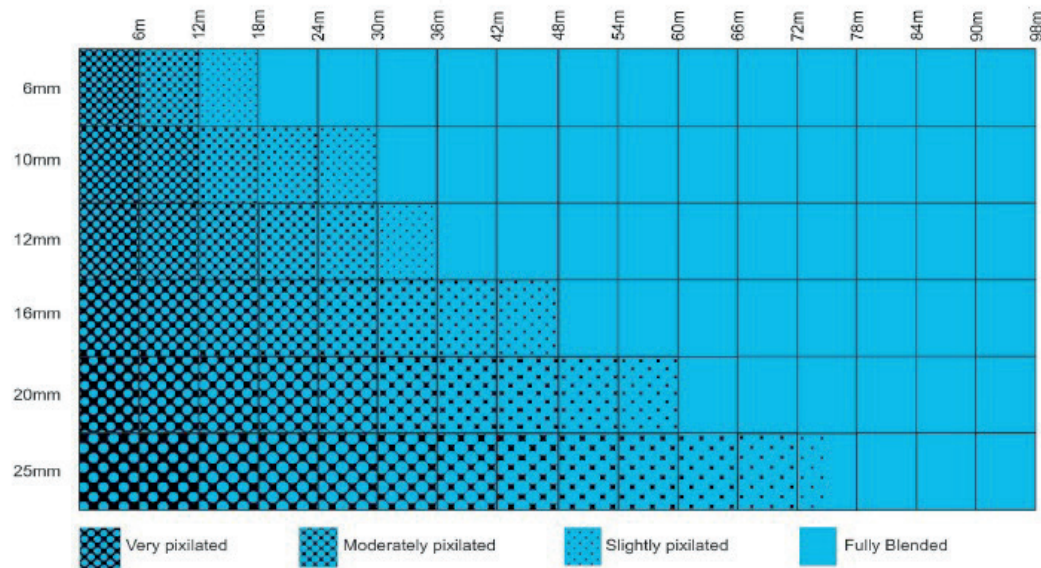
Model: L Frame
Max Rating: 18m(708.66in)
or 25 panels 10 times
safety factor



LED Pixel Pitch Guidance



Blending Chart for Various Pixel Pitches



These are purely guidelines to assist with initial requirements. As LED is a bespoke offering and differs on each requirement this info can be used to help get a general understanding of what need to be considered. Other factors that should also be considered along with these would include (but not limited too):

- Location
- Structure
- Indoor or Outdoor use
- Temporary or Fixed
- Front or Rear Service
- Viewing angles
- Refresh rates
- Brightness
- Colour Reproduction
- Type of content to be played/displayed
- Is planning consent required



TALK TO US ABOUT YOUR NEXT PROJECT

Get in touch:

☎ +44 (0)121 7400 251

✉ sales@onedigitalsignage.com

📍 Units 11 & 12, Gunbarrel Industrial Centre, Hayseech Road, B64 7JZ

🌐 onedigitalsignage.com

ONE 
digital signage.com