



**ELECTRIC VEHICLE CHARGING SOLUTIONS**

## CP6000 Wall Mount Charger

- 7, 11 or 22kW AC options
- Wall Mounted
- Dual Charging - Twin tethered cables
- Mounted LCD Panel
- Simple Contactless Payment facility
- Free Chargepoint application



## CP6000 Kiosk Charger

- 7, 11 or 22kW AC options
- Freestanding bolt to floor
- Dual Charging Twin tethered cables
- Mounted LCD Panel
- Simple Contactless Payment facility
- Free Chargepoint application

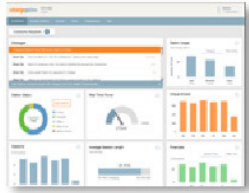


## CP6000 Display Kiosk Charger

- 7, 11 or 22kW AC options
- Freestanding bolt to floor
- Dual Charging - Twin tethered cables
- Mounted LCD Panel
- IP65 rated 32" Screen advertising
- Simple Contactless Payment facility
- Free Chargepoint application



# Feature rich software & services



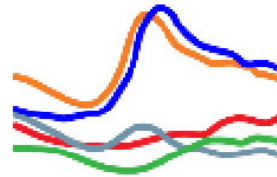
## Dashboard & Analytics

Station owners see how stations are being used and when its time to add capacity.



## Waitlist

Drivers can get in line and get notified when the station is available - improves utilisation.



## Energy Management

Efficiently and automatically utilize power available for charging vehicles. Save money on costly upgrades and avoid demand charges



## Flexible Pricing

By hour, by kWh, by time of day by customer type, or by any combination.



## Access Control

Limit who can use the charging stations and when. Station owners can disable charging during "closed" times.



## Fleet Services

Fleet Managers can track vehicle charging and pay for fuel if the vehicles need to charge at other stations.



## Driver Services

Automatically notify drivers when: full charged, a station becomes available, power outage or decrease and more.



## APIs

Most functions are also available through SOAP/XML and REST APIs that follow the same data access rules as the UI.

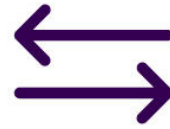
# Charging station care plan



## **24 x 7 proactive monitoring checking station health.**

Remote monitoring of your stations can spot issues before they affect a charging session.

Seeing detailed live status of a station means you're kept informed and our dedicated support team have the details necessary to fix an issue.



## **Configuration changes. Unlimited software changes.**

Whatever you want to change on your charging station, it is included flexible pricing.

Such as adding a flexible pricing policy, altering access to a new driver group, managing the power to a group of stations, we're here to help.

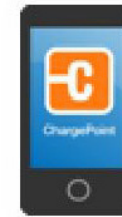
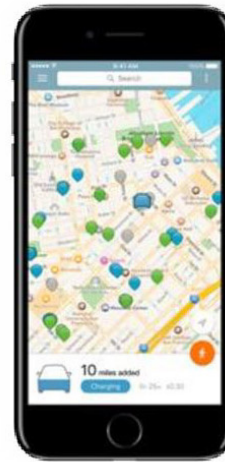


## **98% uptime guaranteed of financial penalties paid.**

Enhances your standard parts warranty with dispatched labour at committed service levels to perform on-site repairs, as well as a long list additional features.

Our support team will rush to your site to repair or replace the station in a given time.

# International free to access roaming network



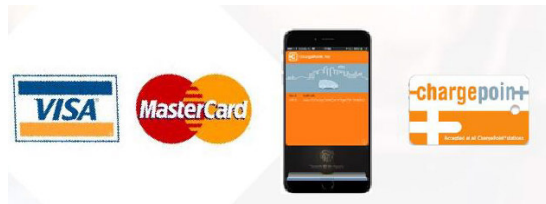
<https://www.chargepoint/drivers/mobile>

- The most open, secure and robust network anywhere, makes it easy for any station to be used by any driver, accessed through any station.
- Supported by chargepoint's 24/7 driver support.
  - Contactless payment & authorisation
  - 4.6 star rated app

# EV Chargers: Payment & Access

All driver can tap in and charge using contactless Credit/Debit card, Apple Pay, RFID cards, NFC, web browser, mobile start phone app (Apple and Android) or drivers can phone call our dedicated professional 24/7 multilingual driver support call centre. The step by step process is illustrated below.

1. To access the charger, the driver has their contactless enabled credit/debit card OR Download the free chargePoint app.



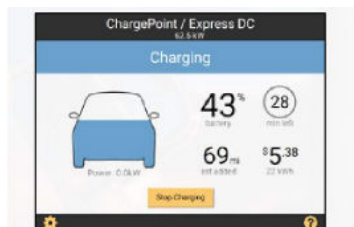
2. Driver uses their chosen access method to tap the RFID symbol on the front of the charging station. This unlocks both charging connectors.



3. Driver chooses the correct corrector type for their EV and plug in, it begins to charge.



4. During session the driver is able to see the relevant € £ \$ per kWh rate and charging speeds on the LCD screen on front of the charging station.



5. To end session the driver uses their same chosen access method to tap the RFID symbol on front of the charging station. This releases the charging connector from the vehicles.



6. Driver returns the connector to the charging station. They will only be charged for the electricity that they use.

