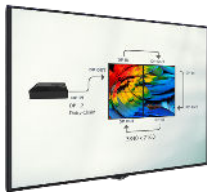




Key Features



Daisy Chain

The display can mirror the content (to another display) into its display port out coming from its display port in. This set up creates a daisy chain like structure allowing for monitors to be set up as Video Wall mode.



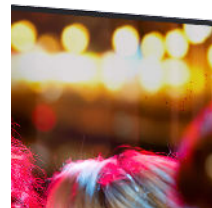
Usb Security

This series lets your USB and your content to be secured within the back cover of the display. The cover is protected with a screw not allowing any outside intervention.



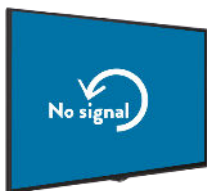
Usb Auto-Play

You will be able to show photo and video content automatically with USB Auto-play feature. SoC software gives you a choice to turn on USB auto-play function making it easy for end-users to show any media on the screen and not worry about anything else.



Subtle Design

This series' displays exhibit ultra narrow bezel design eliminating the visual superfluties, directing audience focus on your advertised content. This series is desirable for its thinnest depth among our digital signage displays.



Signal Failover

Our displays have a protection for "No Signal". If the source is disconnected, the display will either show your customized banner or search for any other signal from video sources. Since blank screen is the worst case scenario for advertisement, failover is one of the critical feature in our signage displays.



Pixel Shifting

The Pixel Shifting feature can be activated in order to reduce the potential risk of image sticking when static content is displayed over long periods of time. The feature periodically shifts the image on the display, without causing any interference of the visual experience.

Panel

Screen Size	86"	Panel Technology	IPS
Backlight Type	ELED	Brightness (typical)	500 cd/m ²
Native Resolution	3840 x 2160 (16:9) - UHD	Contrast Ratio (typical)	1200:1 (typ.)
Dynamic Contrast Ratio	50000:1	Panel Life Time (Min.)	50000 Hrs
Response Time (typical)	8 ms	Active Area (H x V)	1895 (H) x 1066 (V) mm
Viewing Angle	178° Vert., 178° Hor. (89U/89D/89L/89R) @ CR>10	Color Value	1.07B (10 bit)
Color Gamut	72% NTSC	Haze Level	28%
Refresh Rate	60 Hz	Orientation	Landscape / Portrait
Operation Hours	24/7	Area of Usage	Indoor

Built-in System

Mainboard Model	17MB400VS	Operating System	Custom OS (built on Android AOSP)
Memory	2 GB DDR4	Storage	16 GB eMMC
Additional Storage	Micro SD (up to 1TB)	CPU	Quad-Core ARM Cortex-A55
GPU	ARM Mali-G31 MP2	Wired	10/100 Mbps Ethernet - (via USB Dongle), IEEE 802.1X Authentication
WiFi	WiFi 5 (802.11 a/b/g/n/ac)- (via USB Dongle), IEEE 802.1X Authentication	Bluetooth	BT 5.1
HTML5 Browser	Vewd	Wireless Display	Miracast

Monitor Connectivity

Video Input	4xHDMI2.0, 1xUSB-A 3.0, 1xUSB-A 2.0, 1xUSB-A 2.0 (Internal), 1x Micro USB	Video Output	1xHDMI2.0
Audio Output	Headphone, Optic SPDIF	External Control	RS232 (3.5mm jack green), Fast Ethernet (RJ45), Service (RJ12)
External Sensor	RJ12		

Mechanical

Product Dimensions (WxDxH)	1928 x 80 x 1099 mm	Package Dimensions (WxDxH)	2164 x 380 x 1405 mm
Product Weight	62 kg	Package Weight	83.75 kg
Vesa Mounting	600 (W) x 400 (H) mm M8	Bezel Width	B/T/L/R: 12 mm

Environmental Conditions

Operating Temperature	0-40°C	Operating Humidity	10-90%
-----------------------	--------	--------------------	--------

Power

Power Supply	110 VAC - 240 VAC - 50/60 Hz
--------------	------------------------------

Power Consumption

Typical	280 W	Maximum	400 W
Deep Standby	≤0.5 W		

Features

Main Features	HTML5 CMS Launcher, Android CMS Launcher, Open Content Management Support, Scheduler, USB-Autoplay, Auto-Launch, HDMI-CEC, HDMI-Wakeup, Auto-switch on Failover, Panel Lock, OSD and UI Rotation, Video Rotation, NoSignalPowerOff, Pixel shift, Scheduler, Videowall support, Remote control via LAN, Real Time Clock, SNMP	Mechanical Features	Joystick, Rocker Switch, Detachable Power Cable, Detachable Logo, Internal USB Cover
Speaker	2x12 W		

Accessory

Standard	QSG, IB, Power cord, Remote control unit, RC battery, Mounting kit, IR extender cable, WiFi/BT Dongle
-----------------	---

Certification

Safety	Yes	EMC	Yes
CE	Yes		